



2023

中国上海

第七届国际医学人文暑期学校

—— 当前医学教育与卫生保健领域的伦理挑战

7th SUMMER SCHOOL

MEDICINE AND HUMANITIES SHANGHAI 2023

— Current Ethical Challenges in Education & Healthcare

2023.07.05-07.13

上海交通大学医学院
上海中医药大学
里昂大学



SHANGHAI JIAO TONG UNIVERSITY SCHOOL OF MEDICINE



PROGRAMME

02



INTRODUCTION OF THE SPEAKER

03



PRACTICAL INFORMATION

06

SHANGHAI UNIVERSITY OF TRADITIONAL CHINESE MEDICINE



PROGRAMME

10



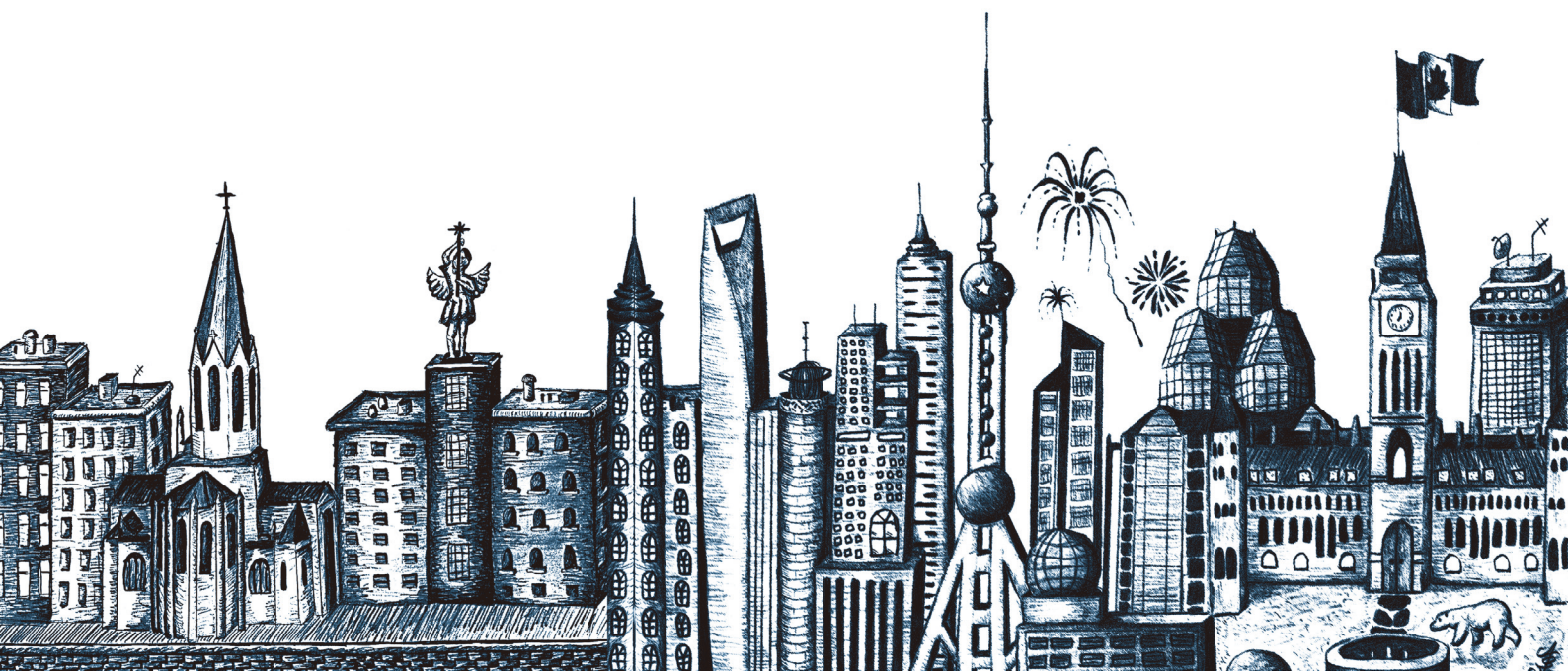
INTRODUCTION OF THE SPEAKER

11



PRACTICAL INFORMATION

15



SHANGHAI JIAO TONG UNIVERSITY SCHOOL OF MEDICINE





PROGRAMME

July 5, 2023 to July 9, 2023

Venue: Room 416, No.2 Building, 280 South Chongqing Road

	MORNING	AFTERNOON
July 5 Wednesday	9:00-10:00 Opening ceremony and ice-breaking 10:00-11:00 Visit to the History Museum of Shanghai Jiao Tong University School of Medicine	13:30-15:00 Professionalism: heritage and evolution By Wang Chunmin 18:00 Welcome Dinner (13th Floor, Kejiao Building)
July 6 Thursday 📍 Minhang Campus	9:30-10:30 Disease and Medicine in Deep History By Lin Minghao 10:45-11:45 "What can I help you with?" – A hitchhiker's guide to generative AIs" By Manuel Charlemagne	13:30-15:30 Chinese calligraphy-The Colorful World of Chinese Zodiac Characters By Zhou Bin
July 7 Friday	9:00-10:30 Ethical Aspects of End of Life and Palliative Care By Zhu Yuqin 10:30-11:30 Visit to Shanghai Jiao Tong University Anatomy Science Base	13:30-15:30 Visit to the Shanghai Museum
July 8 Saturday	9:00-9:45 Suicidality: an issue of teaching and prevention for students and professionals By Emmanuel POULET 10:00-11:00 Student Workshop	Move to SHUTCM
July 9 Sunday	Free Activity	



INTRODUCTION OF THE SPEAKER



Associate Professor
WANG Chunming

Dr. Wang has held and led in multiple positions, spanning over medical service management, research and teaching management of large-scale comprehensive public hospital, with focus on research on applicable innovations in management of large scale multi-district hospital, multi- and interdisciplinary collaborations, international medical service, intelligent healthcare, digitalization and most importantly, establishment and operability of a leading internet hospital.

He leads a project under the National Natural Science Foundation of China, 5 municipal scientific research projects (Shanghai Health Commission, Shanghai Shenkang Hospital Development Center etc.), published more than 30 papers at home and abroad, and won 3 software copyrights.



Associate Professor
Minghao Lin

Minghao Lin, tenure-track Associate Professor in the Department of History, School of Humanities, Shanghai Jiao Tong University, China. His research focuses on ancient exploitation of animal resources, disease revealed by archaeological skeletal samples, the development of Chinese early civilisations, and prehistoric trans-Eurasian exchanges of species and technologies.

Prior to the current position, he earned his PhD degree in Archaeology at the University of Cambridge, and then continued his research in Germany as a Humboldt Postdoc Fellow, supported by a series of competitive grants such as Cambridge Overseas Trust and Wenner-Gren Dissertation Grants. Currently, he is the PI of several research projects including the National Social Science Fund of China. He plays an active role in academia, either as Associate Editor (Environmental Archaeology) and academic reviewer, or as author of one monograph (Springer) and of some academic papers published in Journal of Archaeological Science (Elsevier), Archaeological and Anthropological Sciences (Springer), Holocene (Sage), International Journal of Osteoarchaeology (Wiley), Archaeological Research in Asia (Elsevier) etc.



Associate Professor
Manuel Charlemagne

Dr. Manuel Charlemagne is an Associate Teaching Professor at Shanghai Jiao Tong University. He is a trained mathematician, and his fields of interest expand beyond mathematics and encompass computer science, urbanism, and ethics. He completed his PhD at Dublin City University.



Professor
Zhou Bin

Professor Zhou is Editor-in-Chief of the A Creative Course in Calligraphy for HSK Basic Chinese Characters, Season with Timely Breeze and Rain for Crop Raising Series, and Dictionary of Contemporary and Modern Calligraphers and Calligraphy Evaluation & Appreciation. He is also a co-author of Calligraphy – A Self-taught Course, College Calligraphy Course Book, and A Brief History of Calligraphy.

As a renowned professor and artist, Professor Zhou Bin is dedicated to the international exchange of calligraphy culture and cross-cultural communication, with a mission to break down cultural and language barriers and connect people from different backgrounds around the world through calligraphy, one of the world's long and great artistic traditions. He initiated a calligraphy class in the United Nations Headquarters and was praised by the former U.N. Secretary-General Ban Ki-moon as a "Master of Calligraphy" and an "Ambassador for Calligraphy". Professor Zhou has held series of lectures and exhibitions across the East and West, including United Nations, Yale University, Columbia University, New York University, University of California, University of Leuven in Belgium, Humboldt University in Germany, Cairo University in Egypt, Catholic University in Peru, Asia Society, Bibliotheca Alexandrina, as well as the other institutions all over the world. His calligraphy textbook is also adopted across the globe.

As an important envoy in international calligraphy education and cross-cultural communication, Professor Zhou has created a great impact with his academic and artistic activities to build a bridge of mutual understanding and mutual appreciation.



Lecturer
Zhu Yuqin

As a person with devotion to my duty, I am not content with the necessary professionalism, integrity and the team spirit for my position, and am now fearlessly and skillfully acquiring progress in both medicine and foreign languages.

In teaching students of the Graduate School and international training program, English for Medical Purpose, and undergraduate students of School of Pharmacy Latin for Medical Purpose, I explore the techniques in the global spread of TCM, and in the improvement of their quality of literacy and culture.

And as the chief responsible English editor of Chinese Traditional Patent Medicine, I have devoted myself to the work to find the defaults in the course teaching of English for Medical Purpose and push forward the spread of TCM.



Professor of Medicine
Emmanuel POULET

Emmanuel POULET is Professor of Medicine at the Faculty of East Lyon / University Lyon 1.

A psychiatrist, he is Medical Director of the Psychiatric Emergency Department and the Suicide Prevention Unit.

As a member of the human sciences team at Lyon Est University, he works in particular on the stigmatisation of people with mental health problems in medical studies and on the impact of suicidality on students and carers.

In recent years, he and his colleagues have developed innovative approaches to improve the ability of students and professionals to deal with these situations early and with empathy.

His talk will focus on suicide prevention, with the first part describing and analysing the value of teaching tools for the future practice of medical students, and the second part focusing on the concept of second victim and postvention for healthcare professionals.



PRACTICAL INFORMATION



Shanghai Jiao Tong University School of Medicine



Shanghai Jiao Tong University (SJTU) is a higher education institute in China, which enjoys a long history and a world-renowned reputation. Through 1267 years of unrelenting effort, SJTU has become a comprehensive and research-oriented top international university in China. SJTU enjoys an ever-increasing level of scientific research excellence and technological innovation.

Shanghai Jiao Tong University School of Medicine (SJTUSM) is located in the center of Huangpu district, Shanghai, China, where the innovative spirit, diverse culture and inclusiveness are long-planted. At present, SJTUSM has developed into an innovative research-oriented school boasting high international reputation, competitive faculty, distinctive advantages, outstanding features, and remarkable academic achievements. SJTUSM also achieves all-round development in medical education, clinical services, scientific research and social services.



Getting there



By metro

Line 9, Madang Road

Line 10/13 Xintiandi

Line 1 South Huangpi Road



By bus

36, 933, 869, 974

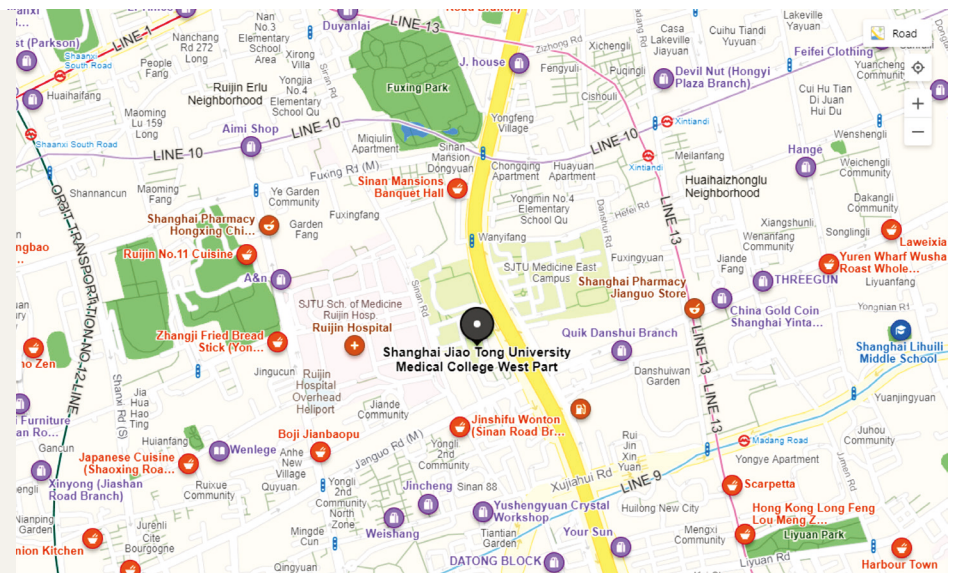
Tunnel Line 8



Taxi booking by phone

Johnson Garage

021-62580000





Hotel Information

Eryi Hotel

Address: No.227, South Chongqing Road, Huangpu District (Located in Shanghai Jiao Tong University School of Medicine)

Tel: 021 63851650

Hotel description: Located in Shanghai Jiao Tong University School of Medicine, Eryi Hotel is a 6-minute walk from SOHO Fuxing Plaza, a 14-minute walk from Xintiandi and a 10-minute walk from Tianzifang. People's Square is 10 minutes' drive and the Bund can be reached in 17 minutes' drive.

Facilities: Wi-Fi is available in all areas and is free of charge. Guests can dine in the restaurant on the 13th floor. All rooms feature air conditioning, a cable TV, an electric kettle, a seating area and a private bathroom with bathrobes, slippers and toiletries. The reception desk is open 24 hours a day. It offers services such as luggage storage, travel ticket booking and visit organization.

Hotel surroundings: Metro stations: Xintiandi 440m
Madang Road 455m Dapujiao 770m



Motel 168 Shanghai Sinan Road

Address: No.113, Sinan Road, Huangpu District

Tel: 021 51703333

Hotel description: Located next to Taikang Road, it features elegant surroundings and an artistic atmosphere. It is very close to Tianzifang, Shanghai Gallery, and the Former Residence of Zhou Enlai. Ruijin Hospital Gate 5 can be reached in only 3 minutes. Located at the intersection of line 9, 10 and 13, the Hotel is only a 5-10 minute walk from metro stations.

Facilities: Free Wi-Fi, luggage storage, air-conditioned rooms, 24-hour front desk, hairdryer, wake-up call

Hotel surroundings: Metro stations: Dapujiao 375m
Madang Road 500m Xintiandi 835m





Visits location information for the first week

Shanghai Jiao Tong University School of Medicine History Museum

On the occasion of the 120th anniversary of Shanghai Jiao Tong University, the History Museum, which was built on October 26, 2012 and reopened on April 7 after renovation, is aimed to show cultural integration between the University and the School.

In the spirit of "imparting knowledge and educating people" and "it takes three generations to make a gentleman", the new History Museum combines in its design the motto of the School "Keep learning all kinds of medical knowledge" to show the characteristics of the School. The Museum exhibits on two floors themes such as Caring Leaders, Famous Professors, Intergenerational Transmission, It takes three generations to make a gentleman, Innovation Enlightenment, Medical Ethics, Learning from others and Spiritual Home. The round insignia of the School engraved on the wall at the entrance not only symbolizes its long history, but also resembles a stethoscope accompanied by heartbeats which are the symbol of a strong vitality. The History Museum has a multimedia interaction area and a rest



Address:

Ground floor, Building 6,
No.227, South Chongqing Road,
Huangpu District

area with guest books to better interact with visitors.

With the medical characteristic design, the Museum exhibits more than 1,000 photographs and a hundred precious cultural relics which reappear the development of the School of Medicine and highlight the long history of its culture.

The History Museum is an epitome of the development of the School of Medicine and a platform to show the long history of its culture. It carries and promotes the motto "Keep learning all kinds of medical knowledge".

Shanghai Museum

Founded in 1952, Shanghai Museum began construction of its new site in August 1993 and reopened on October 12, 1996. With a construction area of 392,000 m² and a land area of 11,000 m², the Museum has two floors below ground and five floors above ground. The structure of the new site is composed of a square low part and a round high part which symbolize "round sky and square earth" in the Chinese tradition. Its name "Shanghai Museum" was written by CHEN Yi, the first mayor of Shanghai after the founding of new China.

Covering an exhibition area of 2,800 m², the Museum has eleven galleries and three exhibition halls. There are nearly a million cultural relics, including 120,000 masterpieces, particularly bronzes, ceramics, calligraphies and

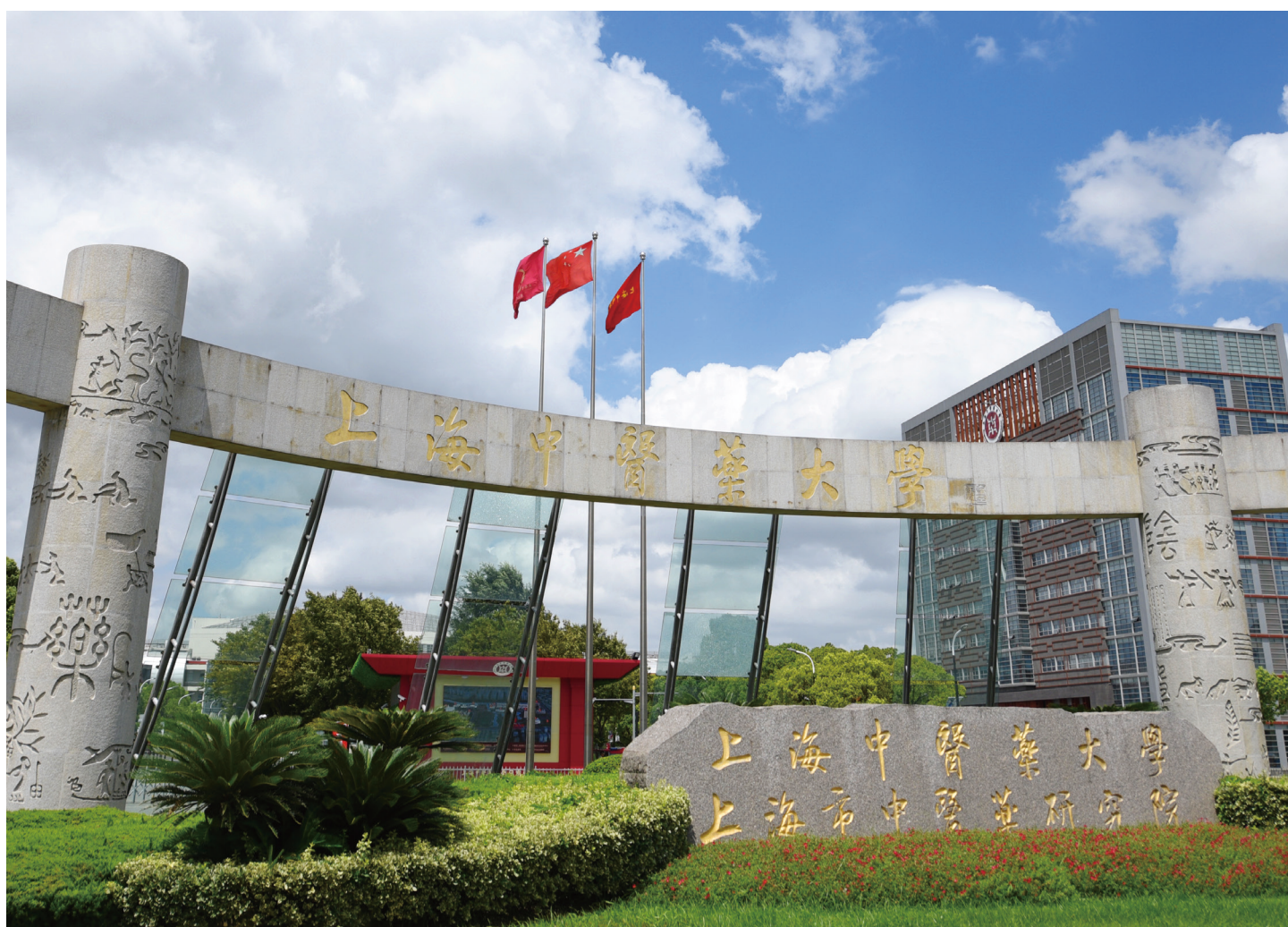


Address:

No.201, People's Avenue,
Huangpu District, Shanghai

paintings. With a large number of bronze objects from different regions, the Museum, called "Half of the Country", is a great museum of ancient Chinese art.

SHANGHAI UNIVERSITY OF TRADITIONAL CHINESE MEDICINE





PROGRAMME

July 9, 2023 to July 13, 2023

Venue: 300 Meeting Room, International Cooperation Center,
Shanghai University of Traditional Chinese Medicine

	MORNING	AFTERNOON
July 9 Sunday	Free Activity	
July 10 Monday	9:00-10:20 TCM and traditional Chinese Culture By Lyu Bin 10:40-12:00 A history of TCM development By Yan Na	14:00-15:20 First aid by integrated Chinese medicine and Western medicine and patient care By Qiu Li 15:30-16:30 Visit to Longhu Hospital Affiliated with SHUTCM
July 11 Tuesday	9:00-10:20 Taiji and health By Zhang Mengshan 10:40-12:00 Introduction to and experience of acupuncture By Wu Fan	13:30-16:00 Tour to the Shanghai TCM Museum
July 12 Wednesday	9:00-10:20 Comparison between and integration of Chinese medicine and Western medicine By Zhao Hailei 10:40-12:00 Student workshop and faculty meeting	13:30-16:30 Visit to SHUTCM Campus, Innovation building and Innovative Chinese Medicine Research Institute 18:00-19:30 Experience Chinese folk music and health-benefiting tea (1 st Floor lobby, International Cooperation Center)
July 13 Thursday	9:00-10:20 Ethical questions in training of integrative medicine By Marceau CHENAULT 10:40-12:00 Introduction to and experience of Tuina By Li Zhengyu	13:30-14:50 Group presentation by students 15:00-15:30 Closing ceremony (Auditorium, the 3rd floor, International Cooperation Center)



INTRODUCTION OF THE SPEAKER



Lecturer
Lyu Bin

Lyu Bin, Master of Clinical Medicine, trained in Traditional Chinese Medicine (TCM) at the Shanghai University of Traditional Chinese Medicine (SHUTCM). He is the Deputy Director of International Student Affairs Office of International Education College (IEC), SHUTCM currently. He is the member of China Association for Acupuncture and Moxibustion, China Sleep Research Society and Shanghai Acupuncture-Moxibustion Association.

Lyu has been actively involved in acupuncture and TCM higher education for international students and international communication of TCM. He practices acupuncture at Yueyang Integrated Chinese Medicine and Western Medicine Hospital Affiliated with SHUTCM. His main research interest is in the field of the basic and clinical research on the prevention and treatment of metabolic associated fatty liver disease (MAFLD) by TCM. His specialties are cervical spondylosis, periarthritis of shoulder, low back pain, knee arthritis, fatty liver disease, sequelae of stroke, insomnia, irregular menstruation and dysmenorrhea.

Course description

The course Traditional Chinese Medicine and Traditional Chinese Culture will have a brief introduction over the basic theories and disciplines of Traditional Chinese Medicine, the four diagnostic methods, the application of Traditional Chinese Medicine in daily life and clinical work and the Chinese culture behind Traditional Chinese Medicine.



Associate researcher
Yan Na

Yan Na, Ph.D., an associate researcher at the Institute of Science, Technology and Humanities, researching medical history, esp. the history of Chinese medicine. Yan Na has been teaching foreign students the History of Chinese Medical in English for years, and she covers much information about traditional Chinese culture in her class.

Course Description

The course "History of Chinese Medicine" involves the origin and development of TCM. Here are the main contents: 1) the basic principle of TCM; 2) the development of medical affairs in different dynasties; 3) famous doctors and their master pieces; 4) international medical exchanges; 5) the introduction of western medicine and its effect on TCM... Besides, traditional Chinese culture plays a very important role in TCM, and they are just like twins, which can never be separated. The basic information about traditional Chinese culture and special contents about TCM will be given.



Lecturer
Qiu Li

Qiu Li, male, Master of Medicine, attending physician of geriatrics, Shanghai teaching expert, gold medal teacher of Shanghai University of Traditional Chinese Medicine, leader of contextual simulation teaching team of Longhua Hospital affiliated with Shanghai University of Traditional Chinese Medicine, the third batch of clinical young backbone teachers of Longhua Hospital, won the first prize of medical group of the 4th Shanghai University Young Teachers Teaching Competition in 2020.

Course description

With the progress of science, medical technology has improved rapidly, but some acute and critical conditions are still difficult to solve. Meanwhile, individual differences and external factors in different patients are also factors that affect the prognosis of the disease. Because of those limitations and uncertainties of medicine, a responsible doctor is always on his way finding the best solution for his patients. In this training, we will work together in the simulated ward to rescue patients with acute myocardial infarction and will experience the joy of success or the frustration of failure together. Let's look forward to the sparks of wisdom that Chinese medicine and Western medicine may collide. Let's look forward to the miracles may happen when Chinese medicine and Western medicine fight together.



Lecturer
Zhang Mengshan

Zhang Mengshan, Lecturer at the Shanghai University of Traditional Chinese Medicine. She has won the national championships as a college student in Taijiquan, five animal frolics, Ba Duan Jin and Yi Jin Jing. She also has the experience of teaching martial arts in Spain and Greece.

Course Description

The word "Taiji" literally means supreme ultimate or origin. In modern explanation, it also means "separation heaven from the earth", "paramount", "unfathomable", "unmeasured vastness" and "boundless". The practice of Taiji aims to achieve balance and coordination, especially dynamic yin-yang balance.



Lecturer
Wu Fan

Wu Fan, Member of the International Classification of Traditional Medicine Committee at WHO. Deputy Secretary General of the Acupuncture Education Committee at Chinese Acupuncture Association. He received a PhD in Acupuncture from Shanghai University of Traditional Chinese Medicine in 2014. In addition to his role as a teacher of meridians and acupoints, his current research focuses on acupuncture analgesia and pain-related depression-like changes.

Course Description

With the popularity of acupuncture and moxibustion around the globe, many people including medical professionals are getting increasing interests in this ancient art of healing. This course aims to give those who have no prior knowledge of acupuncture and moxibustion a brief introduction about TCM external treatment. Students will also have chances to experience the needling treatment in the course.



Associate Professor
Hailei Zhao

Dr. Hailei Zhao, Associate Professor and Associate Chief Physician, Doctor of Integrated Chinese and Western Medicine, Master of Public Administration, Dean of School of Public Health, Shanghai University of Traditional Chinese Medicine (SHUTCM). Before working on the current position, he took the responsibilities of vice president of Yueyang Hospital of Integrated Chinese and Western Medicine, International College of Education, Confucius Institute of Augusta University, Georgia, USA. Mentored by the national well-known TCM expert Professor Jiaxin Qiu, he has been working on the prevention and treatment of malignant tumor in clinical service and research. He has gained much clinical experience from the treatment on the cancers, especially from the digestive system, including the gastric cancer, colorectal cancer, hepatocellular carcinoma, etc. Other social academic responsibilities include managing director of Shanghai Preventive Medicine Association, Vice director of Chronic Disease Management, Shanghai Association of Chinese Medicine, Vice director of Shanghai Hospice and Palliative Care Alliance, etc.

Course Description

Based on the aspects of historical development, philosophic background, the relationship between human being and the nature, we try to explore the comparison the characteristics, advantages and disadvantages of traditional Chinese medicine and western medicine. Mutual complement, appreciation and coordination from both medicines should be achieved in order to providing better service for the people's health.



Lecturer

Marceau CHENAULT

Marceau Chenault is an anthropologist of the body and health practices, with a focus on the circulation of meditative movement and breathing exercises in the field of integrative medicine. As a researcher and training engineer since 2020, he manages both international training of medical humanities and health solidarities at the Faculty of Medicine Lyon East, after being lecturer at Shanghai ECNU and training manager at the Shanghai Qigong Research institute. He is the author of the book *La Danse du Souffle* (Carnets de Sel, 2020), an ethnography of health qigong traditions and creations in contemporary Shanghai, and artistic director of the collective *Danses du Souffle* in Lyon.

Marceau Chenault's talk about "the ethical challenge of integrative medicine training" will describe the teaching learning experiences of new curriculum training about integrative medicine methods, and especially TCM and Qigong, at the Faculty of Medicine Lyon East. He will introduce how the articulation between current biomedicine and new holistic approaches of health brings ethical and cultural questions for training of students, professionals, and patients of healthcare.



Professor

Li Zhengyu

Li Zhengyu, Professor of College of Acupuncture, Moxibustion and Tuina Shanghai University of Traditional Chinese Medicine, Doctor of Medicine, Vice-Chairman of the Professional Committee of Traditional Chinese Medicine Manipulation of the World Federation of Traditional Chinese Medicine, Standing Director of the Professional Committee of Acupuncture, Moxibustion and Tuina of the Chinese Acupuncture and Moxibustion Society, Expert of the Special Clinic Department of Prestigious Chinese Medicine of Yueyang Hospital. The main courses taught in English by him are Tuina Therapy, Science of Tuina, Tuina Manipulation.

Course Description

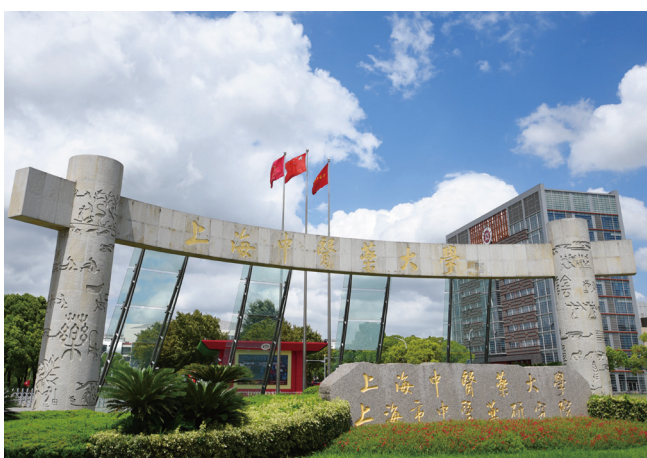
The course Introduction to and experience of Tuina is focusing on the traditional Chinese Tuina therapy from the perspective of traditional Chinese culture. It interprets the relationship between Tuina and acupuncture, the principle of Tuina and treatment of diseases, the indications of Tuina, etc. It shows the Tuina techniques with Chinese characteristics, experiences the application of traditional Chinese Tuina in health care, disease prevention and treatment, and highlights that Tuina therapy has the advantages of taking no drugs nor injection in the prevention and treatment of diseases and health care. To enable students understand the connotation and profound of Tuina therapy.



PRACTICAL INFORMATION



Shanghai University of Traditional Chinese Medicine



Founded in 1956, Shanghai University of TCM, which was named Shanghai TCM College at the beginning, is one of the first four TCM higher education institutes since the foundation of the People's Republic of China.

Adhering to the motto of "Diligence, Benevolence, Truth, Innovation", the university inherits profound cultural legacy, strives to deliver high quality programs of unique strength, and pays great attention to clinical practice. The University regards academic and moral education as its fundamental mission, and promotes collaborative development of education, research and clinical service. In 1985, Shanghai Academy of Traditional Chinese Medicine was founded under the same management system with the university. In 1993, the name of Shanghai University of Traditional Chinese Medicine was officially taken.

In 2000, Shanghai Medical Vocational School was consolidated with the university. In 2003, the university was relocated to Zhangjiang Hi-tech Park in Pudong New Area.

Over the past 60 years, the university has always been home to many distinguished doctors. The education strategy emphasizing solid mastery of TCM knowledge and practice along with deep understanding of modern science and traditional Chinese culture has achieved remarkable results.

The university takes close heed of frontier TCM technology and the critical demand of the country and continues to strengthen international exchange & cooperation. The University currently has 8 affiliated hospitals.

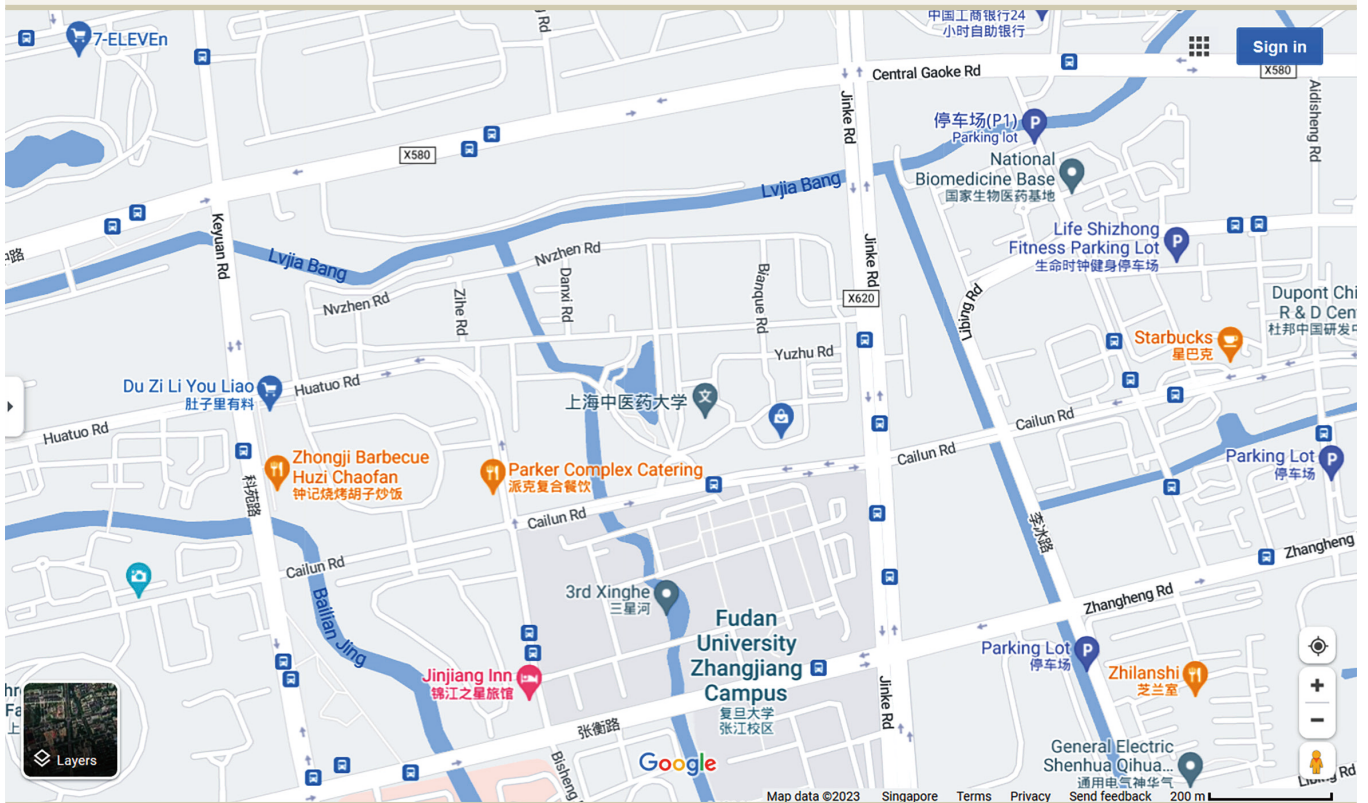
It is also a high-caliber university prioritized by the Municipality and co-sponsored by the Ministry of Education. In 2017, the programs of Traditional Chinese Medicine and Chinese Materia Medica were selected in the National Initiative for Developing Top-notch Programs.

In the fourth round of evaluation conducted by the Ministry of Education, 3 programs including TCM, Chinese Materia Medica and Integrative Medicine were graded A+.

In welcoming the new era, the university will strive to become a world-class TCM university, which stresses excellence in both specialty disciplines and general ranking, and gives equal emphasis to inheritance and innovation, modernization & internationalization, giving full play to the power of TCM.



Getting there



By metro

Line 2 Zhangjiang Hi-tech Park



By bus

161, 188, Pudong 14, Pudong 22, Pudong 25



Taxi booking by phone

Johnson Garage 021-62580000



Hotel Information

Ruyi Smart Hotel

Address: 1500 Keyuan Road (Keyuan Lu), Zhangjiang Hi-Tech Park, Pudong New Area, Shanghai, 201204

Tel: 021-61651111

Hotel description: Shanghai Ruyi Wisdom Hotel is located in Keyuan Road, Zhangjiang Hi-Tech Park, near Zhangheng Road. It takes about 10 minutes to drive to the New International Expo Center and 15 minutes to Shanghai Disneyland.

Hotel rooms are spacious, simple and elegant in design, with clear lines, fashionable and reasonable interior design and carefully selected room supplies, which will meet your needs in all directions. At the entrance of the hotel, you can relax and run to the garden connecting the river. The air is fresh and suitable for walking. It is worth mentioning that there are different family rooms here, which are very suitable for family travel. The lovely theme makes children want to stop, and makes your stay feel very warm. Equipped with self-service washing machine and dryer, it makes you feel at home.

Facilities: Free WiFi is available in guest rooms and public areas. All the rooms are equipped with air conditioning, cable TV, electric kettle and rest area. The hotel offers 24-hour reception. The front desk provides baggage checking, ticket booking and travel arrangements.

Hotel surroundings: Metro Line 2 Station: Zhangjiang High-tech Park Station 1000m





Visits location information for the first week

Shanghai Museum of Traditional Chinese Medicine

Address:

1200 Cailun Road,
Zhangjiang Hi-Tech Park,
Pudong New District,
Shanghai (Inside SHUTCM campus)



The Shanghai Museum of Traditional Chinese Medicine was established in 2003. Formerly known as the Medical History Museum of Chinese Medical Association established in 1938, it covers a floor area of 6,314 m² and an exhibition space of 4,050 m². Outside the Museum, there is an herbal garden of nearly 10,000 m².

The layout of Museum exhibitions is based on historical periods and medical facts. There are a

total of 8 sections, namely Primitive Medical Practice, Preserved Artefacts in Ancient Health Care, Ancient Medical Practice Management, Well-Known Doctors, Medical Classics and Firsts, Ancient Chinese Culture on Nurturing Life, Modern Chinese Medicine in Shanghai, Herbal Formulas, and Present-day Chinese Medicine. These sections enable the viewers to understand Chinese medical achievements in different historical periods and foresee its bright future.



联系人 / Contacts

上海交通大学医学院

Shanghai Jiao Tong University School of Medicine

👤 许淑嫵 / Xu Shuyan

📱 手机号码 / Mobile Phone: 0086 15301953075

✉️ 电子邮箱 / E-mail: Shuyanx@shsmu.edu.cn

💬 微信号 / WeChat : xushuyan0918

上海中医药大学

Shanghai University of Traditional Chinese Medicine

👤 吕斌 / Lyu Bin (Benjamin)

📱 手机号码 / Mobile Phone: 0086 15121036226

✉️ 电子邮箱 / E-mail: lvbinbenjamin@shutcm.edu.cn

💬 微信号 / WeChat: benjaminlyu