

MANCHESTER
1824

The University of Manchester



上海交通大学医学院

SHANGHAI JIAO TONG UNIVERSITY SCHOOL OF MEDICINE

2023 The University of Manchester - China Scholarship Council *Innovation Talent Platform*

Dr. Helen Xiaohui Chen, Senior Lecturer in Dental Biomaterials, FBMH
22nd November 2023

What will be covered today?

- An introduction to The University of Manchester
- An brief introduction to Faculty of Biology, Medicine and Health (FBMH)
- Research excellence in FBMH
- Structure of PhD training in FBMH
- The Innovation Talent Platform by China Scholarship Council (CSC)
- Other funded studentships and self-funded PhDs



The University of Manchester

**Original
and modern**

**Britain's
most popular
student city**

Manchester

**Regarded as the
UK's second city**

£1 billion
Campus
Masterplan
2012–22

**Industrial Revolution
heritage with an
enduring, progressive
can-do attitude**

**Lively,
diverse**

**Sport, culture,
history**



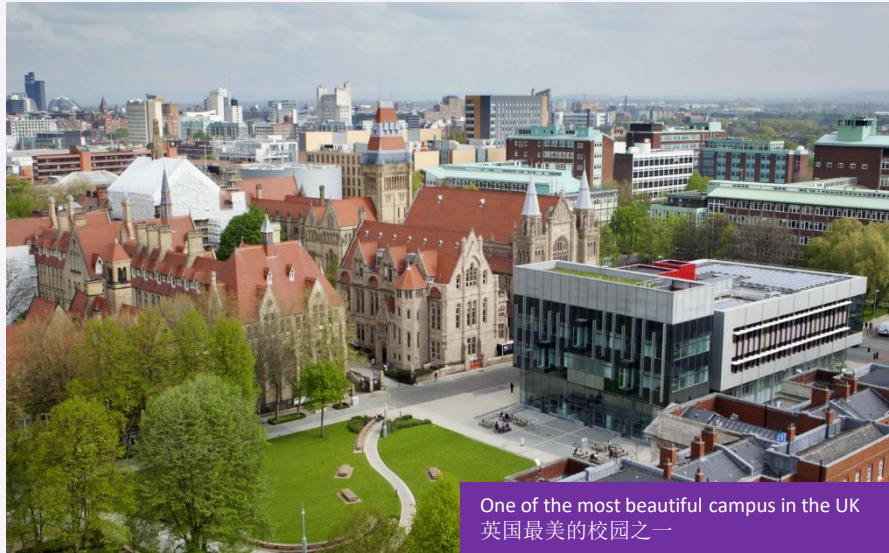
MANCHESTER
1824

The University of Manchester



city centre
市中心

University
校园



One of the most beautiful campus in the UK
英国最美的校园之一



Business School, Executive Education Centre &
Hyatt House 商学院教学楼&校内Hyatt酒店



[Alan Gilbert Learning Common](#)

24小时开放的自习楼 – 提供电脑, 笔记本, 独立小组讨论室等



Henry Royce Institute
英国国家高等材料研究院

- £235m government investment
- world-leading materials scientists
- state-of-the-art equipment
- collaborative space for industrial engagement

25

Nobel Laureates
诺贝尔奖获得者



World-class
Research
高质量研究



Social
responsibility
社会责任

2

Currently working
at the University



Outstanding
learning and
student experience
优异的学生体验

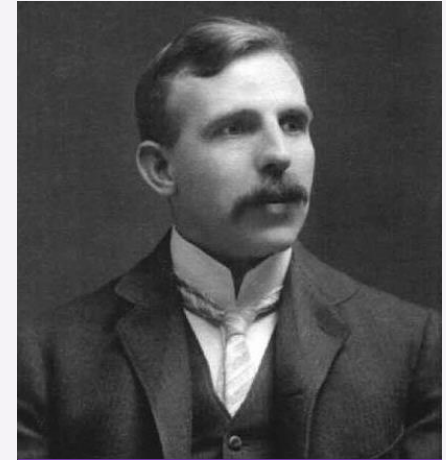
你们认识他们吗？



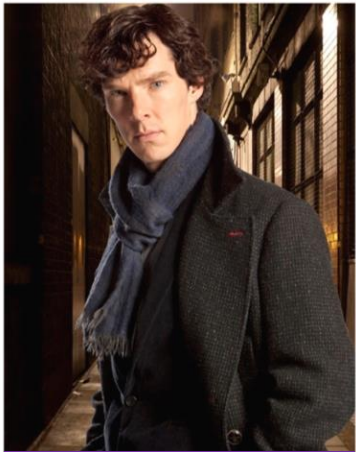
John Dalton, founder of modern chemistry and atomic theory



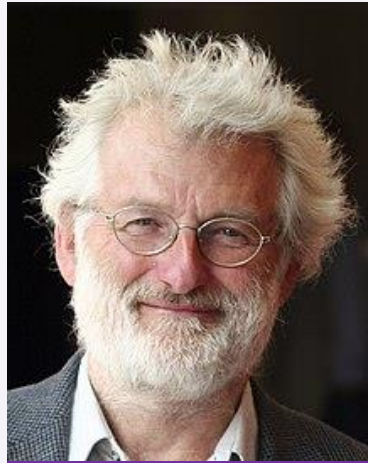
Alan Turing, one of the founders for computer science and AI, Pioneer of Mathematical Biology



Ernest Rutherford, the father of Nuclear Physics, discovered the structure of atom



Benedict Cumberbatch
本尼迪克特康巴



Sir John Sulston, Nobel Prize in Physiology or Medicine in 2002, human genome



Lord Norman Foster
北京首都机场的建筑师

- Ernest Rutherford first split the atom
- Arthur Lewis became Britain's first black professor
- Kilburn and Williams built the world's first stored program computer - The Baby
- Christabel Pankhurst was first women to graduate from the University in law
- Bernard Lovell built the largest steerable radio telescope
- Andre Geim and Kostya Novoselov isolated graphene for the first time

a powerhouse of research and is ranked first in Europe and second in the world for social and environmental impact (Times Higher Education Impact Rankings 2023).



President Xi Jin Ping visited National Graphene Institute in 2015



WORLD RANKING



* QS World Rankings 2023

28th

in the world*

9th

in Europe*

6th

in the UK*

93%

of research is judged to
be 'world leading' or
'internationally
excellent' (REF 2021)

曼彻斯特大学是就业率最好的大学之一



The University of Manchester

- Almost 40,000 students, 12,000 international students – from over 170 different countries
- Research and teaching in all major subjects
- Over 250,000 alumni world-wide
- >£845m income
- >£1bn campus investment
- Each year we welcome more international students than any other UK University

welcoming, accessible and multicultural

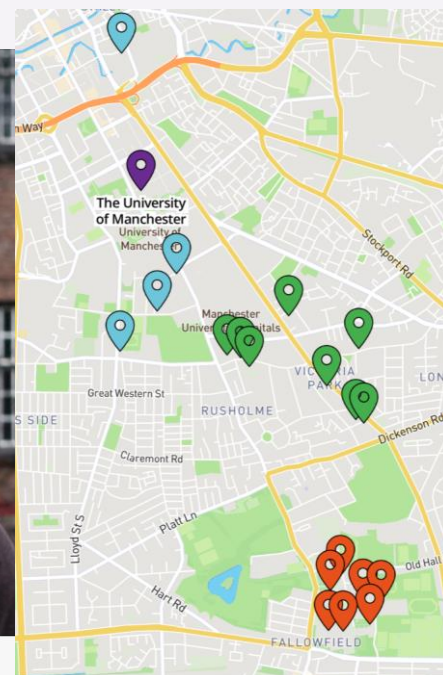


Accommodation 住宿

Accommodation

Choose from three residential campuses to find the room that best suits you.

[Search our accommodation](#)



[Home](#) / [Study](#) / [The Manchester experience](#) / [Accommodation](#)



Student accommodation

Discover more about our halls and three residential campuses.



Life at halls

Learn more about sports facilities, events and student support services.



Find a room

Use our search tool to find the right accommodation for you.



Before you arrive

Meet your flatmates, collect your keys and read our packing checklist.



How to

Find out



Contact

Talk to the options a

- **Guaranteed accommodation, 宿舍保证**
- 8,000 rooms
- Sports facilities 运动设施
- Pastoral support 心理咨询
- Welcome events
- Ensuite or shared bathroom 各种房间
- Self catered or catered halls 餐厅/厨房
- Airport collection 免费机场接服务

Accommodation 住宿



The University of Manchester



Almost 6,000 research and academic staff in three Faculties:

- Faculty of Biology, Medicine and Health
- Faculty of Humanities
- Faculty of Science and Engineering

5 research beacons: pioneering discoveries, interdisciplinary collaboration and cross-sector partnerships to address some of the global challenges:

- Addressing global inequalities
- Advanced Materials
- Cancer
- Energy
- Industrial biotechnology

Faculty of Biology, Medicine and Health

- Created on 1 August 2016
- Merger of the Faculty of Life Sciences and the Faculty of Medical and Human Sciences
- Greater focus in key areas of research, teaching and learning
- Interdisciplinary working enabling us to learn from each other and share best practice
- Translational approach - from discovery science to clinical application and patient care

three schools

- School of Biological Sciences
- School of Medical Sciences
- School of Health Sciences

8 strategic
research
domains

>£300m
annual budget

£122m
annual research income

3,200 staff

13405
students

34 undergraduate
taught
programmes

Faculty of Biology, Medicine and Health

- One of the largest Faculties of this kind in Europe with 13,405 students and **1,765** PhD students from over 60 countries.

- 1/3 are overseas (OS), **151 from China**

- State of the art infrastructure

£170 m investment in Research Buildings



CRUK, Christie, UoM Partners, £150m-Q4/2022

Our Faculty Structure

School of Biological Sciences

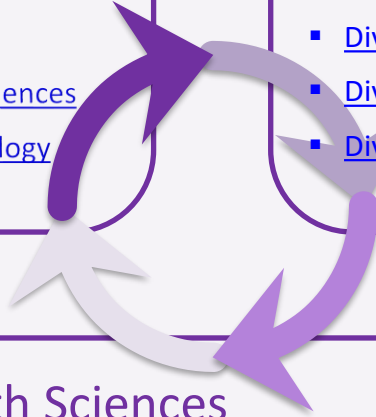
- [Division of Cell Matrix Biology and Regenerative Medicine](#)
- [Division of Evolution and Genomic Sciences](#)
- [Division of Infection, Immunity and Respiratory Medicine](#)
- [Division of Molecular and Cellular Function](#)
- [Division of Musculoskeletal and Dermatological Sciences](#)
- [Division of Neuroscience and Experimental Psychology](#)

School of Medical Sciences

- [Division of Cardiovascular Sciences](#)
- [Division of Dentistry](#)
- [Division of Developmental Biology and Medicine](#)
- [Division of Diabetes, Endocrinology and Gastroenterology](#)
- [Division of Medical Education \(including CHSTM\)](#)
- [Division of Cancer Sciences](#)

School of Health Sciences

- [Division of Human Communication, Development and Hearing](#)
- [Division of Informatics, Imaging and Data Sciences](#)
- [Division of Nursing, Midwifery and Social Work](#)
- [Division of Pharmacy and Optometry](#)
- [Division of Population Health, Health Services Research and Primary Care](#)
- [Division of Psychology and Mental Health](#)



Our Institutes, Networks and Centers

Institutes

- [Cancer Research UK Manchester Institute](#)
- [Christabel Pankhurst Institute for Health Technology Research and Innovation](#)
- [Lydia Becker Institute of Immunology and Inflammation](#)
- [Cathie Marsh Institute for Social Research](#)
- [Manchester Institute for Collaborative Research on Ageing](#)
- [Institute for Health Policy and Organisation](#) (Alliance Manchester Business School)
- [Institute for Data Science and artificial intelligence](#) (Faculty of Science and Engineering, FSE)
- [Manchester Institute of Biotechnology](#) (FSE)

Networks

- [Antimicrobial Strategy Manchester](#)
- [Autism@Manchester](#)
- [Biomarkers Manchester](#)
- [Dementia@Manchester](#)
- [Manchester Regenerative Medicine Network \(MaRM\)](#)
- [Nanotechnology in Medicine \(NanoMed\) Network](#)
- [Child Health Research Network](#)
- [Evidence Synthesis Research Network](#)
- Manchester Biomaterials Network (FSE)
- Smart Wearable/Textile Network (FSE)

Centers

- [Arthritis Research UK Centre for Epidemiology \(CfE\)](#)
- [Arthritis Research UK Centre for Genetics and Genomics \(CfGG\)](#)
- [Cancer Research UK Cancer Biomarker Centre](#)
- [Cancer Research UK Manchester Centre](#) (major centre)
- [Cancer Research UK Lung Cancer Centre for Excellence](#)
- [Cancer Research UK Radiotherapy Centre of Excellence \(RadNet\)](#)
- [Centre for Biological Timing](#)
- [Centre for the History of Science, Technology and Medicine \(CHSTM\)](#) (includes Wellcome Unit for the History of Medicine)
- [Centre for Pharmacoepidemiology and Drug Safety \(CPDS\)](#)
- [Centre of Excellence in Biopharmaceuticals \(COEBP\)](#)
- [Geoffrey Jefferson Brain Research Centre \(GJBRC\)](#)
- [Health eResearch Centre \(HERC\)](#)
- [Innovate Manchester Advanced Therapy Centre Hub \(iMATCH\)](#)
- [International Centre for Language and Communicative Development \(LUCID\)](#)
- [KNH Centre for Biomedical Egyptology \(KNH Centre\)](#)
- [Manchester Centre for Genomic Medicine \(MCGM\)](#)
- [Manchester Collaborative Centre for Inflammation Research \(MCCIR\)](#)
- [Movember Centre of Excellence in Prostate Cancer](#)
- [NIHR Applied Research Collaboration \(ARC-GM\)](#) (formerly CLAHRC)
- [NIHR Centre for Precision Approaches to Combatting Antimicrobial Resistance](#)
- [NIHR Greater Manchester Primary Care Patient Safety Translational Research Centre \(GMPSTRC\)](#)
- [NIHR Manchester Biomedical Research Centre \(BRC\)](#)
- [NIHR Manchester Experimental Cancer Medicine Centre](#) (adult and paediatric ECMCs)
- [NIHR/Wellcome Trust Manchester Clinical Research Facility](#)
- [North West Centre for Advanced Drug Delivery \(NoWCADD\)](#)
- [Proton Beam Therapy](#) (PRECISE group)
- [Wellcome Trust Centre for Cell-Matrix Research \(WTCCMR\)](#)

Our Research Technology Platforms

allow the interrogation of biology and disease from molecular interactions to whole organisms.



Investment and expertise

Our technology platforms contributed significantly to our REF 2021 4* rating for a world-leading environment underpinning outstanding fundamental bioscience research. The competitiveness of our research infrastructure is maintained through continual investment in the equipment base (£42m since 2014), the expertise of our 50 dedicated technology specialists, and the academic oversight of each facility.



A community of users

Over 1,000 researchers, spanning clinical, translational and basic science, use our technology platforms every year. They form a vibrant community of users that constantly develop and share methodologies. Our facilities are highly integrated, with many workflows linking them, such as within the [Stoller Analytical Centre for Clinical Discovery and Diagnosis](#) and our [applications in single cell biology](#).

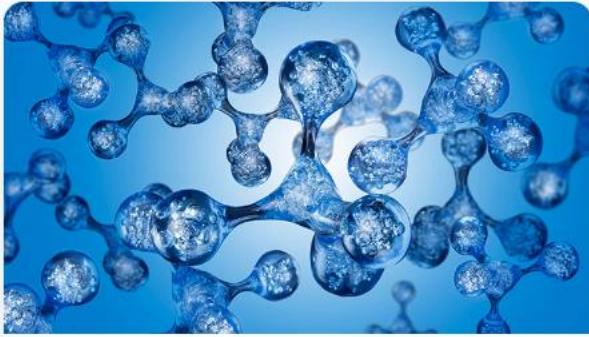


End-to-end support

Our staff provide comprehensive support throughout the entire experimental process, from initial consultation on appropriate strategies and planning, through to sample preparation, and data acquisition and analysis. Advanced training is also available for many techniques.

Research Facilities

Core research facilities run by dedicated Experimental Officers



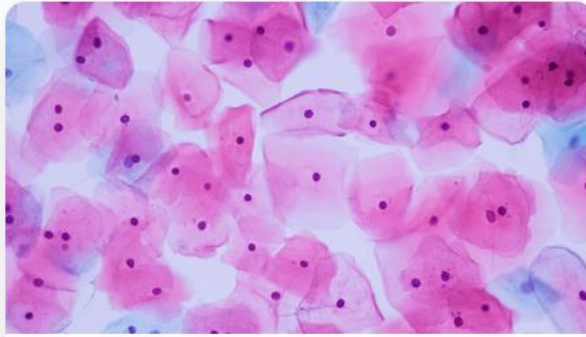
Molecular

[Biomolecular analysis](#)

[Electron microscopy](#)

[Genomic technologies](#)

[Mass spectrometry](#)



Cellular

[Bioimaging](#)

[Flow cytometry](#)

[Genome editing](#)



Organismal

[Biological services](#)

[Clinical and pre-clinical imaging](#)

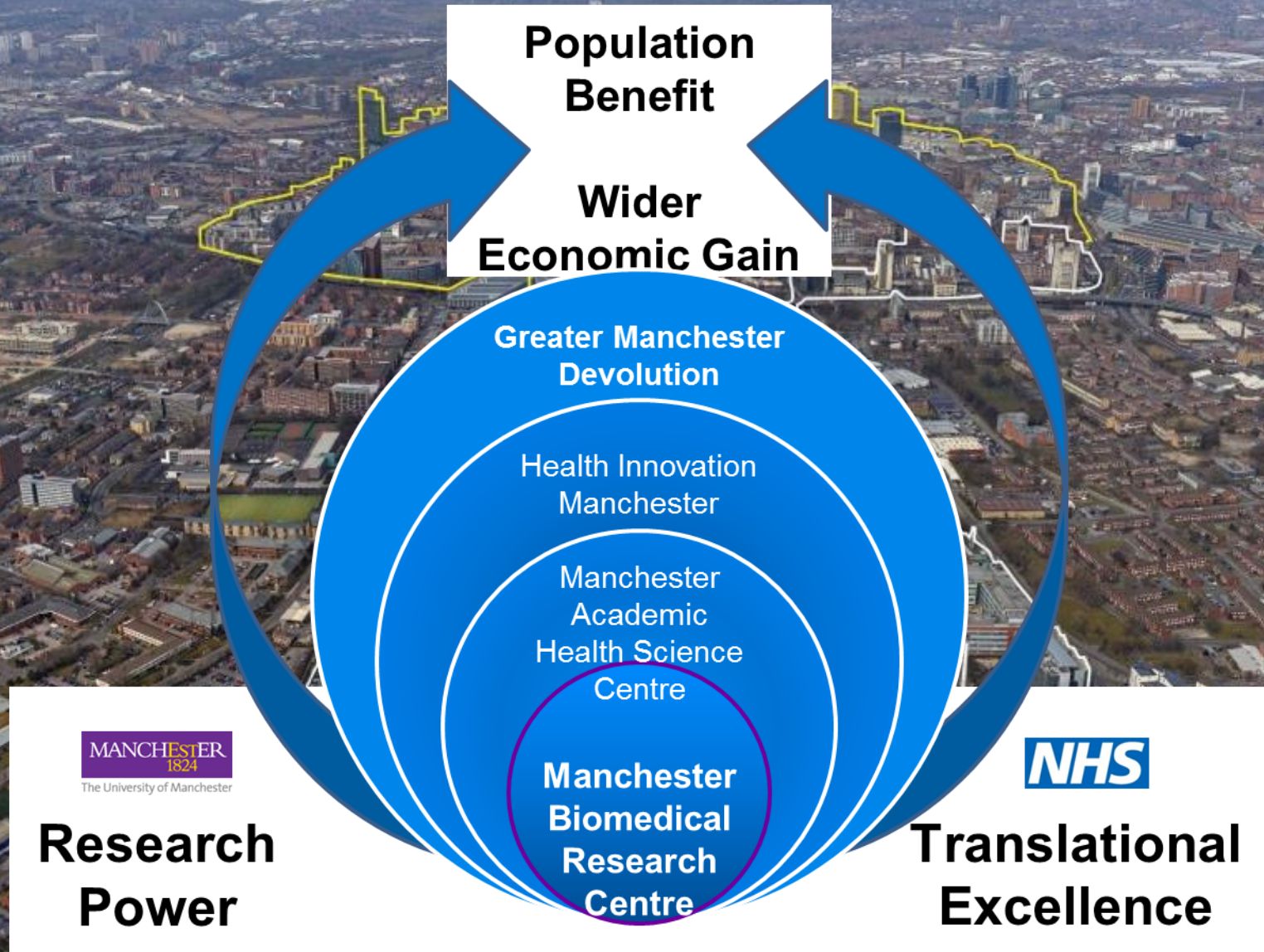
[Fly Facility](#)

[Histology](#)

[Manchester Clinical Research Facility \(MCRF\)](#)

Cross-facility support for
[Bioinformatics and computation](#)

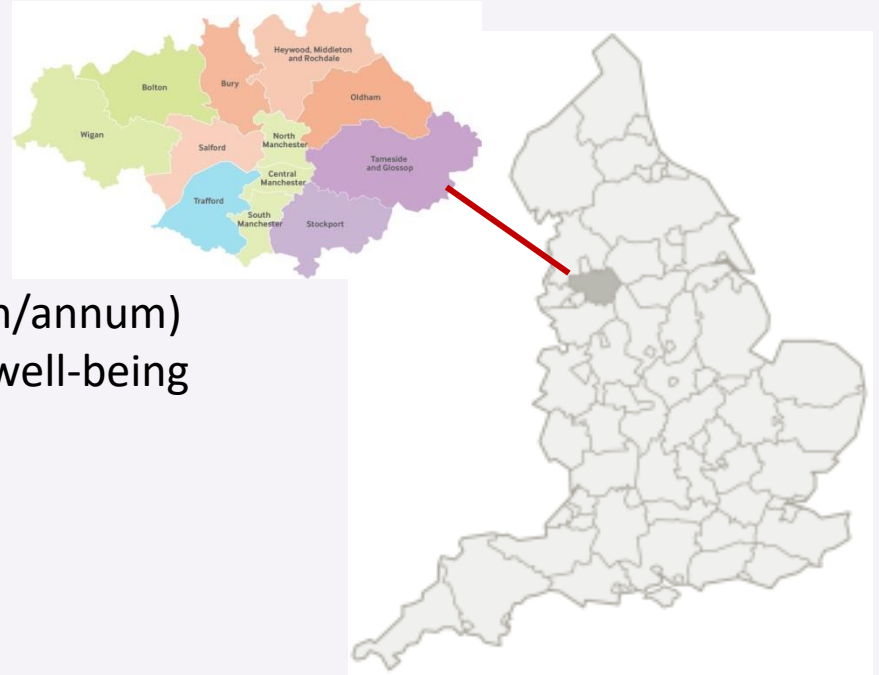
Greater Manchester innovation ecosystem for translational medicine



Greater Manchester

A Devolved Health and Social Care System

- 2nd largest UK conurbation
 - 3m ethnically diverse population
 - High levels of social deprivation
 - Poor health outcomes
- Integrated Health and Social Care budget (£6bn/annum)
 - Deliver rapid improvements in health and well-being
- Trust / University Partnership
 - Federated with four other NHS Trusts
- Access to a defined population
 - Governance arrangements in place
- Drive innovations into healthcare at pace and scale
 - Exemplar for wider NHS
- An agile system
 - Influence NHS procurement



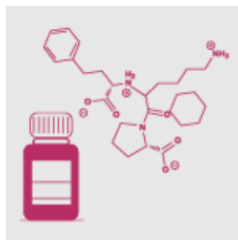
World-leading Research in FBMH

Drawing together expertise from across biosciences and biotechnology, medical, health and care sciences, we're developing innovative solutions to the world's biggest challenges to transform lives, making positive changes to the global community.



Driving innovation in cancer therapy

Our research into personalised forms of immunotherapy has undergone rapid commercialisation to deliver life-saving results for patients worldwide.



Reducing the cost and time of drug development

Researchers have invented a technology that measures the 3D shapes and flexibility of potential medicines, helping to reduce the cost of drug discovery.



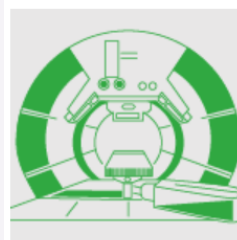
Driving the industrial biotechnology revolution

Our Centre of Excellence for Biocatalysis, Biotransformations and Biocatalytic Manufacture is pioneering enzyme discovery and engineering to deliver cheaper, safer and more sustainable chemical manufacturing.



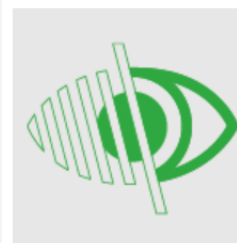
Shaping healthcare guidelines to prevent and reduce stillbirths

Our researchers worked with NHS England and Tommy's Baby Charity to influence health policy and improve parental awareness to reduce stillbirths and save lives.



Bringing proton beam therapy centres to the UK

Our research was vital in opening the UK's first high-energy proton beam therapy centre, removing the need for costly overseas travel and helping more patients to receive cancer treatment.



Transforming care for people with inherited blindness

Our research into the genetic causes of blindness has revolutionised testing and transformed care for more than 10,000 patients worldwide.

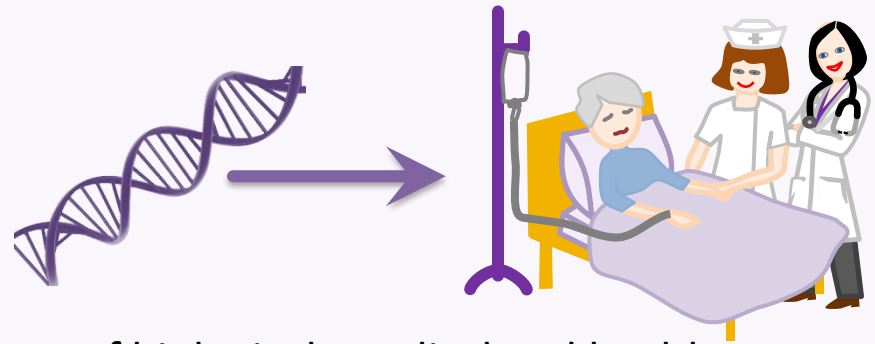
PhD Programmes in FBMH



PhD Training in FBMH

Deep interest in science or healthcare and motivated to make exciting new discoveries.

- Independent research project – multidisciplinary, research spans molecular science to translational medicine and health policy.



- Structured training programme across a range of biological, medical and health sciences to enhance progress.
 - Courses on research methods and critical thinking skills
 - [Doctoral Academy Training Programme](#)
 - Advanced training in discipline related topics
 - Contribution to social responsibilities
- 3 or 4 year duration, depending on prior research experience.
- [PhD programme with integrated teaching certificate.](#)

What do you get through your PhD training and your career options?

An independent, responsible researcher with research & interpersonal transferable skills;

- Publications (maybe patent(s) and commercial products)
- Conference attendance (maybe visit to another institution worldwide)
- Involvement in grant proposal writing
- University level, national and international awards and Prizes

**Future
Leaders**

- Network, potential collaborator(s) and alumni;
- Experience of a different culture;
- Involvement for activities contribute towards the social responsibility agenda;
- Career advice.

Career Options

- Postdoctoral research (University or Industry)
- Teaching (Higher Education or Schools)
- Biochemistry and medical science (Health service or Private sector)
- Medical writing
- Medical practice
- Industrial companies

Support for PhD Students

- [Buddy schemes](#)
- [English language courses](#)
- [Training and development](#)
- [Student support](#)
- [Supervisory team](#): main and co-supervisor(s)
- Cohor Advisor & PGR tutor
- [FBMH Doctoral Academy](#)
- Thriving [International Society](#), [Doctoral Academy](#), [Graduate Society](#), [China student Societies](#)



Courses and Resources By Theme

- + Starting Postgraduate Research
- + Managing Your Research Project
- + Research Skills
- + Communicating Research
- + Career Development
- + Personal Development
- + Networking

- [Researcher Development website](#) - for the latest PGR training courses.
- [My Research Essentials](#) (MRE) is the Library's researcher development programme:
 - [online resources](#)
 - [workshops](#)
 - [online publication](#)
 - [blog](#)
- [My Learning Essentials](#) (MLE) is the Library's award-winning skills programme:
 - [online resources](#)
 - [workshops](#)
- [Specialist Library Support](#) (SLS) is the Library's skills support programme focusing on more specialist topics:
 - [referencing support](#)
 - advanced searching
 - [workshops and drop-ins](#)
 - [ask an expert](#)
- [Careers Service support](#)
- [Disability Advisory and Support Service \(DASS\)](#)
- [Research IT](#)
- [Equality, Diversity and Inclusion](#)

Key Events



Summer Research Showcase

An annual celebration of postgraduate research providing PGs with an opportunity to disseminate their research to a wider audience.



3 Minute Thesis

A national competition providing researchers with the opportunity to present their research in just three minutes.



Researcher Development Seminars

Exploring key researcher development topics with guest speakers.

Development Opportunities



Teaching Opportunities



The Brilliant Club

Training Providers



Research IT



My Research Essentials



Entrepreneurship



Translation Manchester

Supporting you

A central place for you to access support services, resources to support your day-to-day wellbeing and find answers to common queries. Everything you need, right here at your fingertips.

Accessing support services

Mental health and wellbeing

From tips to support everyday wellbeing, through to assistance with mental health concerns

Specific communities

Specific support for student groups including care experienced, estranged, LGBTQ+ and more

UK visas and immigration

Application advice, your student visa responsibilities and more

24 hour mental health helpline

Physical health

Resources and information about services to improve and maintain your physical health

Academic support

Including available support, mitigating circumstances and tips for managing studies

Student Services Centre

Help with any practical/administrative matters of university life, including student cards and letters



Help in a crisis or emergency

Report and support

Report instances of microaggression, harassment and discrimination

Financial support

Fees, funding and managing your money - including student finance and the living cost support fund

A-Z of services

Find out about university services, from the Careers Service to Sport

- To further promote domestic and overseas collaboration in the cultivation of innovative talents with international vision,
- To increase support for the construction of first-class Universities and first-class disciplines,

Categories	UoM PhD Degree	Co-Supervised PhD
Definition	PhD student registered at UoM, Award from UoM.	<ul style="list-style-type: none"> ■ Students registered solely on the SJTUSM PhD programme (including the 3-year or 5-year routes, suitable for y1 PhD). ■ Will obtain 1 degree from SJTUSM, but will work on a joint research project during their PhD studies, which is agreed by key PIs from both sides.
Numbers (min and max)	Minimum 2 and maximum 3	Minimum 3 and maximum 4
Studentship/ Tuition Fees	UoM to cover tuition fees (max 3 years)	Registration fees (~£225) to be included in the project fees
Project Fees	UoM to cover project fees (max 3 years)	SJTUSM to cover
Stipend	CSC cover a min of 36 months and max 48 months, including flight costs.	Covered by CSC
Duration	Min 3 years at Manchester.	Min 1 year and Max 2 years at Manchester.

priority research collaboration areas: Neuroscience, Cancer Research, Immunology and inflammatory Disease.

- Nov 2023: SJTUSM call for applications (students will apply their CV, PhD research proposal and English language if they have)
- 5th Jan 2024: **deadline** for application
- 19th Jan 2024: Deadline for supervisors to notify Forbes if they want their students to be considered. If no response received then will be automatically rejected.
- 24th Jan 2024: Top 5 notified (and unsuccessful students/supervisors).
- 26th Jan 2024: Deadline for the 5 selected candidates apply online for PhD at UoM
- 29th Jan-2nd Feb 2024: online interview
- 2nd Feb 2024: Candidates and DA notified
- 12th Feb 2024: DA makes offers to 3 successful candidates, conditional offers
- 13 -29th Feb: 3 successful candidates prepare application materials
- 1-10th March 2023: CSC Innovative talent program online application

UoM-CSC Joint Scholarships

- 6 CSC studentships, 2 for each School, covering tuition fees and living expenses (usually 3 years), one round-trip international airfare.
- A 2 stage application process:
 - 1) stage 1 application to University of Manchester,
 - Online Application (deadline to be confirmed, mid-January 2024); in the funding section select a UoM-CSC Award,
 - Been Interviewed and offered a PhD place by potential supervisory team,
 - hold an unconditional offer letter from The University of Manchester,
 - Jointly work with supervisory team to complete a nomination form, submitted by supervisor by mid Feb 2023
 - Each School will shortlist and nominate 2 applications to be considered for funding by CSC.
 - An unconditional offer will be issued.
 - 2) Stage 2, application to CSC, requires an applicant to hold an **unconditional offer**.
 - return to China upon completion of their studies and/or research.
 - satisfy [CSC's selection criteria](#)

Other Funded PhD Opportunities

■ University of Manchester President's Doctoral Scholar (PDS) Awards

- 3.5-year fully funded scholarships - highly competitive, online application deadline **12th January 2024**, PDS nomination deadline **23 February 2024**,
- all university tuition fees at the international rate;
- an annual maintenance stipend (at UKRI rate) plus a £1,000 enhancement.

■ 17 Funded PhD programmes



Manchester Biomedical Research Centre (BRC) PhD studentships

Studentships for clinical and non-clinical PhD projects in cancer, inflammation and other areas with the Manchester BRC.

More about the Manchester BRC PhD studentships



Excellence in Diversity PhD Scholarships

Fully funded studentships for candidates from groups under-represented in postgraduate research.

More about the Excellence in Diversity scholarships



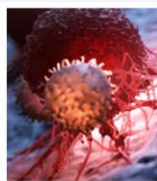
MRC DTP

The MRC Doctoral Training Partnership provides an outstanding environment for PhDs in the biomedical sciences.



BBSRC DTP studentships

The BBSRC Doctoral Training Partnership provides an opportunity to experience cutting-edge research in the biosciences.



Wellcome Trust Immunomatrix in Complex Disease

A 4-year PhD programme at the interface of immunology and matrix biology research.



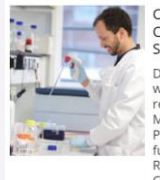
British Heart Foundation PhD

Our 4-year BHF PhD provides an intensive introduction to cardiovascular research.



Dual Award PhD with the University of Melbourne

Apply for a project from the Dual Award PhD programme between Manchester and Melbourne.



CRUK Manchester Centre PhD Training Scheme

Develop a career in world-leading cancer research with clinical, MB-PhD and non-clinical PhD opportunities funded by the Cancer Research UK Manchester Centre.



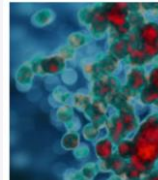
CRUK Manchester Institute PhD studentships

The Cancer Research UK Manchester Institute have PhD projects on offer spanning the whole spectrum of cancer research.



Cancer Research UK MB-PhD

Combining medical training with research training in the area of cancer sciences.



Kennedy Trust IMPACT Inflammation MB-PhD

Combining the vocational training of a medical degree with the research expertise of a PhD.



Weizmann Institute of Science PhD studentships

Conduct research at Manchester and in Israel through our funded four-year PhD projects.



Social-Biological CDT

PhD studentships are available in an innovative new centre for doctoral training in biosocial research.



HDR UK/Turing PhD Programme in Health Data Science

PhD studentships are available for research within health data science.



The Boots Company CTP

Undertaking world-class bioscience research in skin health.



ESRC North West Social Science Doctoral Training Partnership

ESRC funding for postgraduate training in the social sciences is available through the North West Social Sciences DTP.

More about the ESRC North West Social Science DTP

Self-funded PhD Opportunities

- FBMH also welcome self-funded PhD students

[Tuition fees](#), for the academic year **2024/25 (Sep 2024 entry onwards)** the international fees are:

- Standard - £26,500
- Band 1 - £27,500 (low consumable research project)
- Band 2 - £34,500 (medium consumable research project)
- Band 3 - £39,500 (high consumable research project)

- Entry requirements:

1. Bachelors honours degree equivalent to UK upper second class (2.1, equivalent to average score $\geq 80\%$) in relevant subject area
2. Relevant Research experience
3. IELTS score ≥ 6.5 overall or TOEFL iBT ≥ 90

Each component of the English test should meet the **minimum** requirement of IELTS 5.5 in all components or 22 in TOEFL (iBT). For the **writing component** in IELTS we expect that you have achieved **a minimum of 6.0**.

Some programmes require overall IELTS 7.0 and in each component, please check the [subject listings page](#).

How to apply?

- Decide on the type of degree (PhD, MPhil or MD Medicine)
- Choose a project and potential supervisor(s)

[project database](#), [view funded programmes](#), [University research explorer](#). Contact FBMH Doctoral Academy for support in finding a supervisor -- don't be afraid to contact a potential supervisor.
- Submit an [online application form](#) with supporting documents

If you have not yet identified a supervisor, you are welcome to submit an open application.

 - Supporting statement (Personal statement, motivation, experience etc)
 - 2 academic references on your academic ability - [download our referee report form](#)
 - certificates and transcripts from all your previous degrees
 - evidence of English language ability
 - *Curriculum vitae* (CV)
 - [research proposal](#) /dissertation from your previous degree(s) & published paper if applicable.
- Receive acknowledgement for Admissions, supervisory team interview, PGR tutor interview /panel interview
- Receive & accept an offer

Questions & contacts

- Any questions?
- FBMH contacts:
 - Admissions Doctoral Academy fbmh.doctoralacademy.admissions@manchester.ac.uk;
 - Dr. Xiaohui Chen (Helen), xiaohui.chen@manchester.ac.uk, Senior Lecturer in Dental Biomaterials, School of Medical Sciences, FBMH;
 - Prof. Qing-Jun Meng, qing-jun.meng@manchester.ac.uk, Professor of Chronobiology and Director of Internationalisation, School of Biological Sciences, FBMH;
 - Dr. Forbes Manson, Forbes.D.Manson@manchester.ac.uk, Senior Lecturer in Ophthalmology, Director of International PGR, FBMH.
- Shanghai Jiao Tong University School of Medicine contact:
 - Mr. Cheng Zhao (Floyd) Deputy Director, Office of International Affairs.

Visiting Scholar / SJTUSM & Hospital Staff

Can apply under CSC Innovation talent platform

Dr Xia Lv, a postdoctoral fellow has successfully applied and will join Dr. Lamb and Proff. Chinoy

- Candidates have already achieved PhD degrees and are employees of SJTUSM or its associated hospitals.
- Candidates are already in the research group led by the key PIs from SJTUSM.

Please consult Mr Zhao how to apply.

<https://www.staffnet.manchester.ac.uk/human-resources/visitors/>